

# PLANT DATA SHEET

For any enquires please contact  
[office@civilsydney.com.au](mailto:office@civilsydney.com.au)

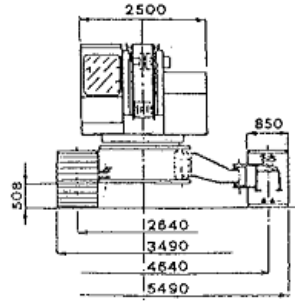
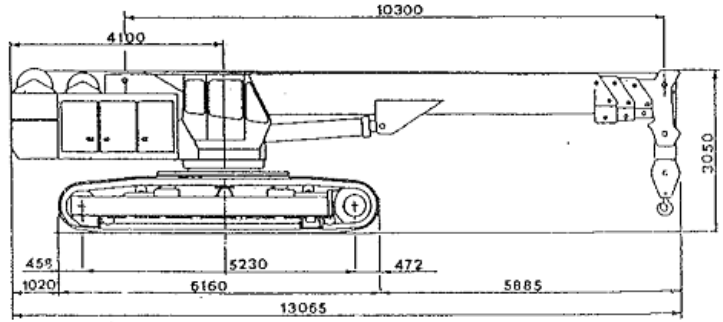
23 Channel Road  
 Mayfield West  
 NSW 2304  
 Ph. (02) 4058 1800  
[www.civilsydney.com.au](http://www.civilsydney.com.au)

ABN 15 068 316 432

<b>Make:</b>	P&H	<b>Model:</b>	A50C
<b>Year:</b>	1996	<b>Plant ID:</b>	PN002 & 062 Two Units
<b>Plant Description:</b>		<b>Capabilities:</b>	
<p>The A50C's full hydraulic Jib and ability to be transported with full counter weight allows for quick setup times and with a working radius of over 30m makes it ideally suited for a range of applications. These cranes can be used for such tasks as piling works with flying hammers bridge erecting and servicing of piling operations.</p>		<ul style="list-style-type: none"> <li>• Wet &amp; Dry Hire</li> <li>• Pick &amp; Carry</li> <li>• Piling Hammers available</li> <li>• Range of lifting equipment including ground release shackle, spreader bars, concrete kibles and more</li> </ul>	



<b>Operational Weight:</b>	51,000kg
<b>Traveling Length:</b> (Transport)	13,100mm
<b>Working Length:</b> (Front of track to rear of counterweight)	7,200,,
<b>Traveling Width:</b> (Transport)	3,500mm
<b>Working Width:</b> (Tracks Extended fully)	5,500mm
<b>Traveling Height:</b> (Transport)	3,100mm
<b>Working Height:</b> (Without lattice)	34,00mm
<b>Winch Capacity:</b>	50,000kg



**Additional Features:**

- Annual 'Crane Safe' & NDT
- WorkCover registered
- 360deg Cameras
- On Board Computer
- Service history and plant RA
- Rear View Camera
- E- Stops & Load Cells
- Access Handrails and platforms
- Spill Kits
- Tagged & tested Lifting equipment

