

# JLG 660SJC Telescopic Crawler Boom Lift

**CIVIL SYDNEY**  
PTY. LTD.

The JLC Telescopic Boomlift combines high mobility 4WD tracks with zero turning radius to handle sites of any size and terrain. The single drive/steer joystick provides greater comfort and usability allowing for one handed operation.

We can offer both Wet & Dry hire options including drilling tools as well as a complete piling solution (Design, Certification and construction) for any size foundation project

23 Channel Rd,  
Mayfield, NSW 2304  
Phone: 4058 1800

[www.civilsydney.com](http://www.civilsydney.com)

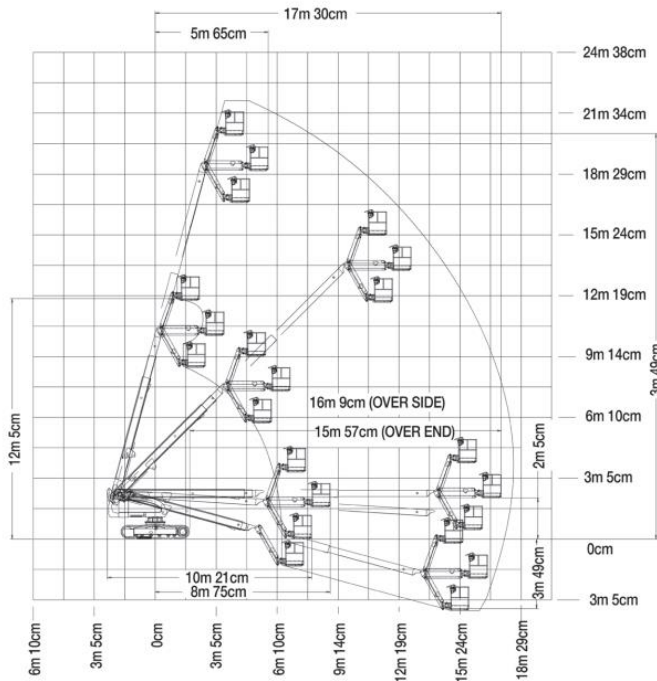
Available for both Wet  
and Dry Hire



**CIVIL SYDNEY**  
PTY. LTD.

[www.civilsydney.com](http://www.civilsydney.com)

# JLG 660SJC Telescopic Crawler Boom Lift



Machine Type	Boom Lift
Serial No	0300120316
Plant No	PN033
Manufactured Date	2007
Operational Weight	12300kg
Overall Width	2.49m
Stowed Height	2.57m
Stowed Length	10.21m
Horizontal Outreach	17.3m
Platform Capacity (Unrestricted)	230kg
Platform Height	20.32m (max.) 22.32m (Working)
Slew (Continuous)	360 degrees
Max Ground Bearing Pressure	45KPa

## Additional Information:

- ✚ Risk Assessments
- ✚ Service History
- ✚ Travel Alarm
- ✚ Spill Kits,
- ✚ First Aid Kit,
- ✚ E-Stops,
- ✚ Safety Harnesses
- ✚ Multi axis 4 degree level sensor
- ✚ Zero turning radius

23 Channel Rd,  
Mayfield, NSW 2304  
Phone: 4058 1800

[www.civilsydney.com](http://www.civilsydney.com)

