

# PLANT DATA SHEET

For any enquires please contact  
[office@civilsydney.com.au](mailto:office@civilsydney.com.au)

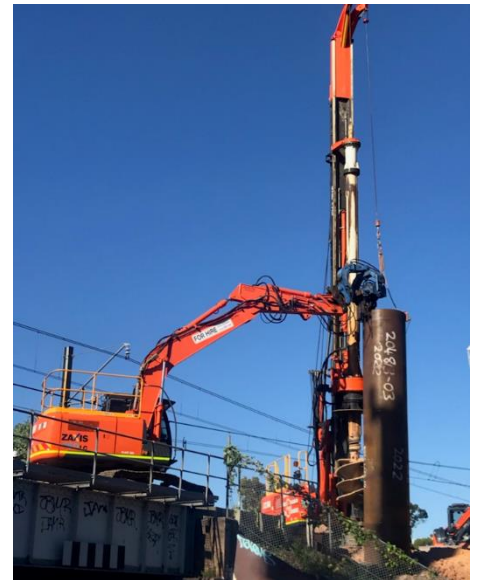
23 Channel Road  
 Mayfield West  
 NSW 2304  
 Ph. (02) 4058 1800  
[www.civilsydney.com.au](http://www.civilsydney.com.au)

ABN 15 068 316 432

<b>Make:</b>	Hitachi	<b>Model:</b>	- ZX55U-5a - ZX160-3	- ZX260-5 - ZX225-5
<b>Year:</b>	2009 to 2018	<b>Plant ID:</b>	PN005, PN055, PN056 & PN061	
<b>Plant Description:</b>			<b>Capabilities:</b>	
We have a fleet of late model Hitachi excavators set up specifically for piling applications. Vibratory hammers for sheet pile & casing work. Driving hammers for steel, concrete & timber piles. High torque drill motors allowing us to drill piles in excess of 10m, 300mm to 2,000mm diameter			<ul style="list-style-type: none"> <li>• Sheet Piles</li> <li>• Bored piles</li> <li>• Driven piles</li> <li>• Excavation works</li> <li>• Servicing of piling rigs</li> </ul>	



PN056 – ZX260-5



PN005 – ZX160-3



PN061 – ZX225-5



PN055 – ZX55U-5a

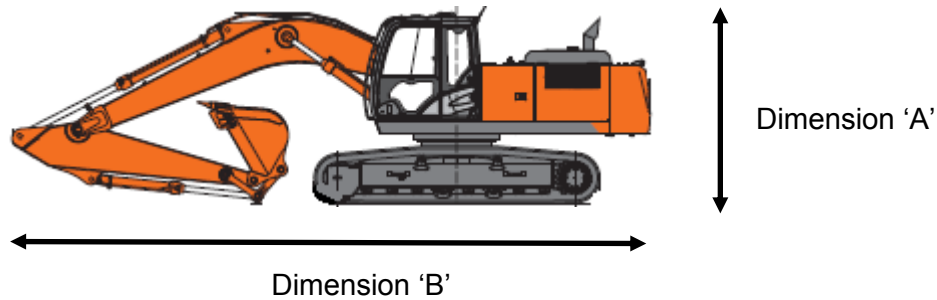
# PLANT DATA SHEET

For any enquires please contact  
[office@civilsydney.com.au](mailto:office@civilsydney.com.au)

23 Channel Road  
 Mayfield West  
 NSW 2304  
 Ph. (02) 4058 1800  
[www.civilsydney.com.au](http://www.civilsydney.com.au)

ABN 15 068 316 432

	ZX55U-5A	ZX160-3	ZX225-5	ZX260-5
<b>Plant No.:</b>	PN055	PN005	PN061	PN056
<b>Year:</b>	2017	2009	2019	2019
<b>Operational Weight</b>	5,200kg	16,000kg	23,500kg	26,000kg
<b>Track Width:</b>	2,000mm	2,500mm	3,000mm	3,200mm
<b>Ground Pressure:</b>	30kpa	42kpa	55kpa	52kpa
<b>Dimension 'A':</b>	5,500mm	8,550mm	10,200mm	10,270mm
<b>Dimension 'B':</b>	2,600mm	3,200mm	3,250mm	3,370mm



## Travel Dimensions

### **Additional Features**

Risk Assessments

Service History

ROP's & FOP's

Travel Alarm

Slew & Height Restrictors

Rear View Cameras

Spill & First Aid Kits

E-Stops

Access Rails

Anti-Burst Valves

Fully auto Quick hitch with secondary lock & certified lift point

Inclinometers

Load Charts