

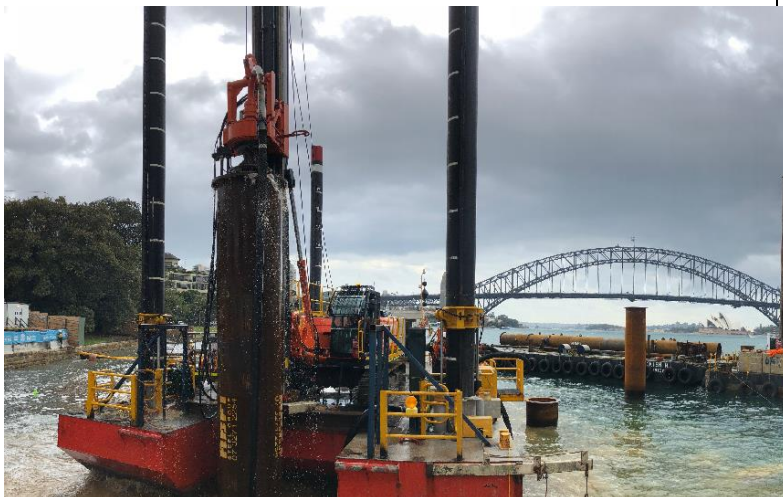
PLANT DATA SHEET

For any enquires please contact
office@civilsydney.com.au

23 Channel Road
 Mayfield West
 NSW 2304
 Ph. (02) 4058 1800
www.civilsydney.com.au

ABN 15 068 316 432

| | | | |
|--|---------|--|----------|
| Make: | Soilmec | Model: | SR30 EVO |
| Year: | 2018 | Plant ID: | PN058 |
| Plant Description: | | Capabilities: | |
| <p>The SR30 EVO has the ability to drill piles 400mm to 1500mm to a depth of 35m. The rig is self-erecting and requires no dismantling for transport allowing for quick setup times once unloaded. It's high torque drill motor is ideally suited to rock drilling as well as high volume production</p> | | <ul style="list-style-type: none"> • Bored Piles • Raked pile drilling • Casing installation (Rotary) | |



| | |
|---|----------|
| Operational Weight: | 36,000kg |
| Traveling Length: (Transport) | 12,700mm |
| Working Length: (Centre of Pile to rear of counterweight) | 6,100mm |
| Traveling Width: (Transport) | 2,500mm |
| Working Width: (Tracks Extended) | 3,700mm |
| Traveling Height: (Transport) | 3,400mm |
| Working Height: | 17,900mm |
| Aux Winch Capacity: | 6,500kg |
| <u>Drill Motor & Kelly</u> | |
| Kelly Bar: | 4 x 9.5m |
| Drilling Torque: | 130KNm |
| <u>Additional Features</u> | |
| Annual 'Pile Safe' & NDT | |
| ROP's & FOP's | |
| 360deg Cameras | |
| On Board Pile monitoring system | |
| Service history and plant RA | |
| Enviro PANOLIN Hydraulic oil | |
| E- Stops | |
| Access platforms | |
| Fire Extinguishers | |
| Aux Line Storage device OEM | |
| Certified Lifting equipment | |

