

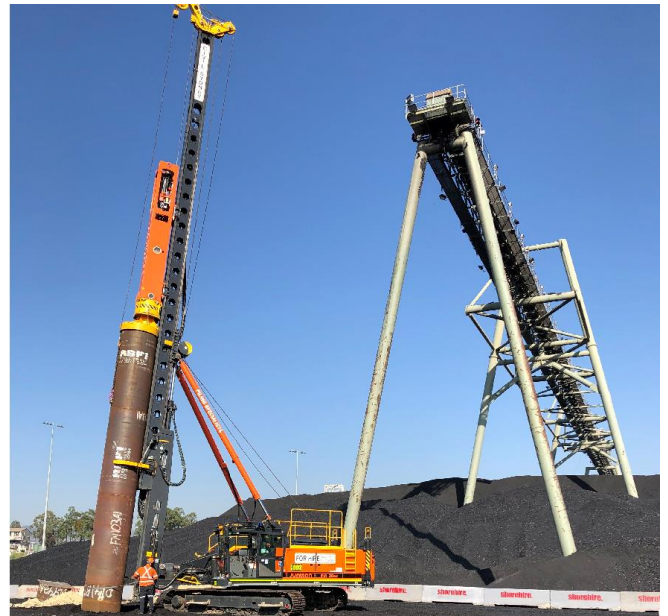
PLANT DATA SHEET

For any enquires please contact
office@civilsydney.com.au

23 Channel Road
 Mayfield West
 NSW 2304
 Ph. (02) 4058 1800
www.civilsydney.com.au

ABN 15 068 316 432

Make:	Junttan	Model:	PM20 LC
Year:	2018	Plant ID:	PN060
Plant Description:		Capabilities:	
<p>The Junttan PM20LC is a compact piling rig for driving steel, concrete & timber piles. The rig can self-pitch piles up to 18m long without the need for predrilling. It has a much increased capacity for larger hammers (up to 9t ram weight) and wider load reach over a standard PM20 rig. It also has the capacity to be fitted with vibratory piling hammers for sheet pile or casing applications</p>		<ul style="list-style-type: none"> • Steel Piles • Pre-cast Concrete • Driven Timber • Sheet Piling • Pile casings 	



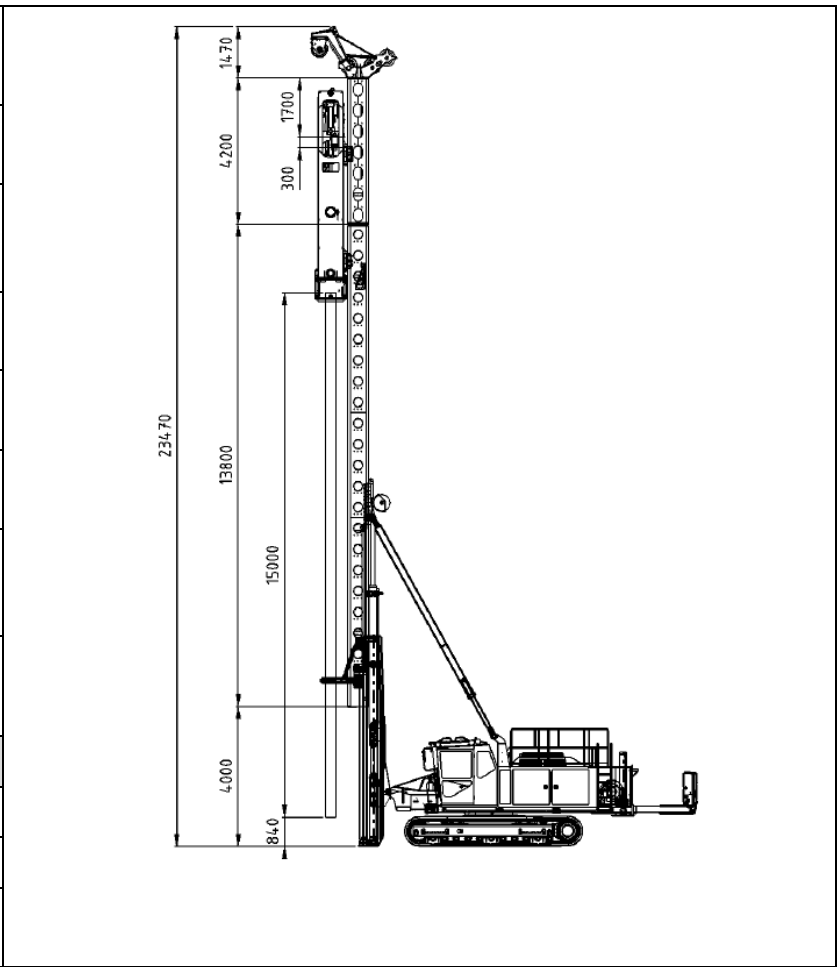
PLANT DATA SHEET

For any enquires please contact
office@civilsydney.com.au

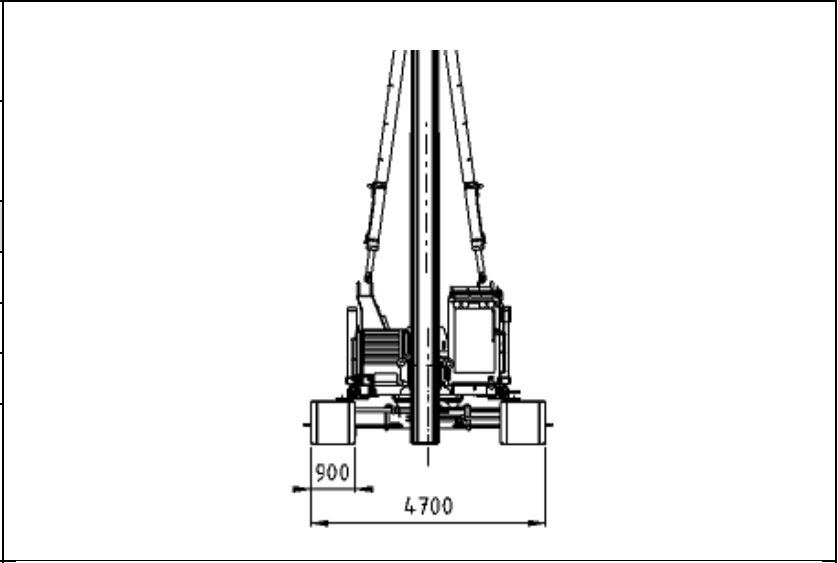
23 Channel Road
 Mayfield West
 NSW 2304
 Ph. (02) 4058 1800
www.civilsydney.com.au

ABN 15 068 316 432

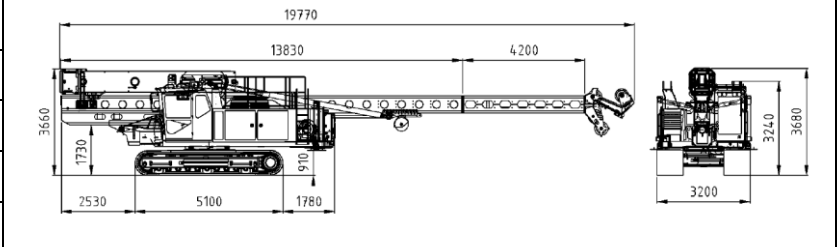
Operational Weight:	62,000kg
Traveling Length: (Transport)	19,800mm
Working Length: (Centre of Pile to rear of counterweight)	8,200 – 11,400mm
Traveling Width: (Transport)	3,200mm
Working Width: (Tracks Extended)	4,200mm
Traveling Height: (Transport)	3,800mm
Working Height: (With & without leader extension)	23,500mm – 26,500mm
Aux Winch Capacity:	8,000kg (With Load cell)



Hydraulic Hammer	
Model:	HHK 5/7AS
Max Stroke:	1,200mm
Blow Rate: (Per minute)	40 - 100
Ram Weight:	5,000kg or 7,000kg
Total weight:	9,100Kg or 11,700kg



Additional Features:	
Annual 'Pile Safe' & NDT	
ROPS & FOPS	
360deg Cameras	
On board POM Software – allows for full pile measurement start to end of drive including live transfer between rig and office (No requirement for manual set count)	



Service history and plant RA
Enviro PANOLIN Hydraulic oil
E- Stops & Load Cells
Access Handrails and platforms
Aux Line Restraint Device OEM